

*the***ultimate**[®]
collection



PANORAMA

SuperSlim

Aluminium Windows Bi-fold and Sliding Patio Doors





PANORAMA SUPERSLIM ALUMINIUM CASEMENT WINDOWS

PERFORMANCE & AESTHETICS

Panorama SuperSlim Windows offer minimal sightlines for maximised views. With optional PAS24:2022 certification, the Panorama SuperSlim Window exceeds Part L compliance with a WER rating of A, and a new build requirement of 1.4 W/(m²k) is achieved when combined with highly energy efficient glass.

The Panorama SuperSlim Window is available in two distinct designs. Firstly, we have the 'Contemporary Sash' design, which features a sleek and modern look with a 73mm frame depth. This design is perfect for those who prefer a clean and minimalistic aesthetic. Additionally, this system can be seamlessly integrated with our SuperSlim Bi-Fold when side panels and flag windows are required, offering versatility and consistency in your window and door solutions.

Alternatively, if you are looking for a more traditional appearance, the 'Flush Sash' design might be the ideal choice for you. With a frame depth of 81mm, this system exudes a classic and timeless charm, adding a touch of elegance to any property. Both designs offer exceptional quality and performance, and we are confident that you will find the perfect fit for your project.

WHY CHOOSE ALUMINIUM?

Aluminium is extremely durable and more hard-wearing than other materials on the market. You'll be able to enjoy Panorama SuperSlim aluminium windows for decades to come due to their high resistance to the elements.

It is also an incredibly strong material, providing a high level of security and impact resistance.

Aluminium windows are among the best insulated on the market, thanks to advanced thermal break technology, which prevents cold transfer.

They require very little maintenance to ensure optimal performance and a fresh aesthetic.





STYLE & VERSATILITY

The Panorama SuperSlim Window is available in two styles, a contemporary or flush sash look, both options offer minimal sightlines.

With its elegant, contemporary design, the Panorama SuperSlim Window perfectly complements our SuperSlim Bi-fold Door and Sliding Patio Doors, bringing you a cohesive range of products.

All configurations of the SuperSlim Window system can be finished in several glazing options to create a style that suits any property.

- SuperSlim Profile Sections
- 28mm Double Glazing (Standard)
- Alternative 44mm Triple Glazing Option
- Contemporary / Flush window options, 1.4 U-value, Energy rating A (WER) (subject to suitable glazing specification)
- Side hung / top hung / fixed light options available



Locking System

Bi-directional espag cams with hinge wedge. Night vent facility

Optional Astragal Georgian Bar

25mm or 40mm Astragal Bars can be added*

Alternatively, 18mm or 25mm Internal Georgian bars are also available

Hinges

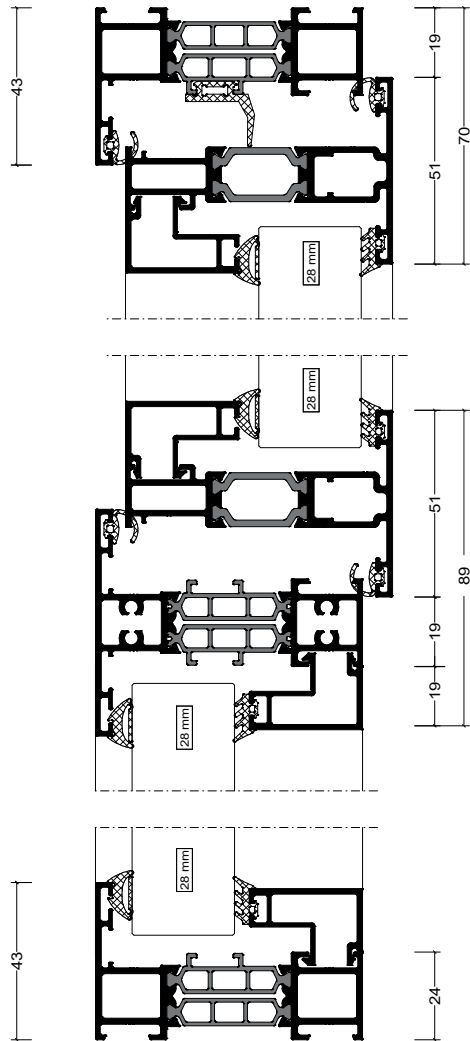
Yale high security fire escape / easy-clean hinges fitted as standard to all side opening windows (Optional restrictor hinges)



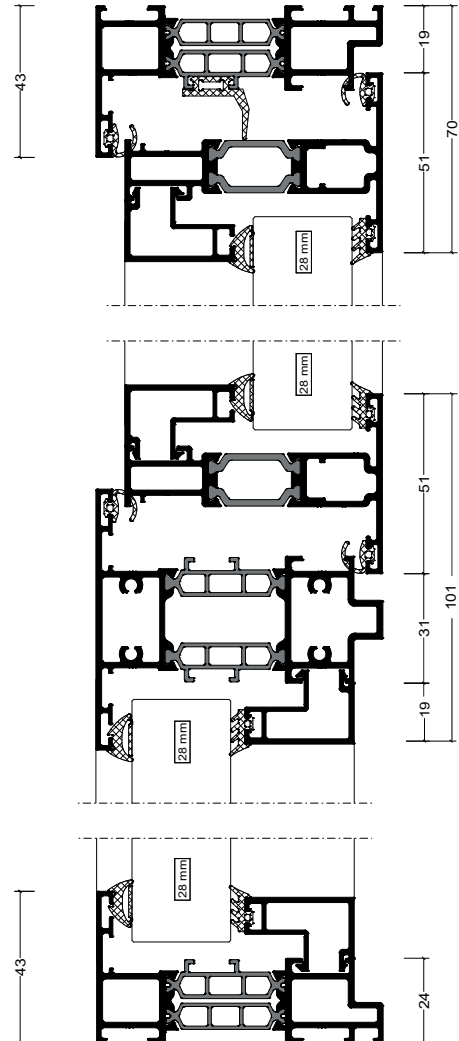
Lockable handle

White
Black
Anthracite Grey
Polished Chrome
Satin Chrome
Gold

Contemporary Window Style Vertical Section



Flush Window Style Vertical Section



WATER RESISTANCE

Excellent weather sealing is achieved using specially designed perimeter seals, with the option of weather piles for lower thresholds. Weather tightness tested to British standards.

THERMAL EFFICIENCY

The SuperSlim system exceeds Part L compliance with a WER rating of A, and new built requirement of 1.4 W/(m²k) is achieved when combined with energy efficient glass.

LOW MAINTENANCE

Our low maintenance aluminium windows are strong, durable and highly corrosion resistant. Unlike timber, they don't need painting or staining to keep them weatherproof, and they won't rust or corrode. They will also never rot, peel or flake.

MAXIMUM VISION

The SuperSlim Window is designed to collaborate all our SuperSlim aluminium products. The SuperSlim sashes are a great option to complement the slim profile of our modern bi-fold and patio doors to make the most of your stunning views.



SUPERSLIM ALUMINIUM BI-FOLD DOORS

SUPERSLIM

The PANORAMA SuperSlim bi-fold system is designed to minimise frame sightlines and accentuate the glass area. Sightlines of just 107mm from sash to sash ensures a sleek, contemporary look.

With sash sizes available up to 1200mm wide and 2880mm high per pane, the PANORAMA SuperSlim bi-fold system offers part L compliant U-values as low as 1.4 W/m²K (DER Rating B), when installed with energy efficient glazing, and is also secure to PAS24 (subject to specification).

Available in a number of configurations using up to 6 door leaves, you can specify a design where all the door leaves stack to the same side, or a design where some stack one way and some the other. Choose whether you want the doors to open in or out, and remember that designs with a single traffic door enable you to slip quickly and easily into the garden, while leaving the other doors in place.

An optional moving corner post enables right angled bi-folding doors, including the return, to open out fully with the necessary structural support in place, with the option of a fixed corner.

Precision engineered hardware results in effortless operation making it a pleasure to open up your home to the outside.

PROFILE OPTIONS

PANORAMA SuperSlim bi-fold sashes are available in 2 profile designs: Square - for a classic look and Textured Square - offering a more contemporary look (7016 Anthracite Grey finish only in Textured Square).



Adjustable Jamb (Optional)

The PANORAMA SuperSlim bi-fold system offers optional adjustable jambs allowing adjustability of +/- 4mm either side on installation and adjustability with an allen key thereafter.



TECHNICAL PERFORMANCE

- Market-leading maximum sash size of 1200mm x 2880mm.
- Sash to sash sight lines of just 107mm.
- Multi-point double hook, 6 point locking mechanism.
- PAS24: 2022 compliant for security (subject to specification).
- Glazing thickness up to 44mm.
- Energy efficiency rated U-values as low as 1.4 U W/m²K and Door Energy Rated (DER) B to meet Part L requirements.
- Weather proof tested to BS6375 Part 1 : 2009.
- Frame depth of 73mm.
- Single or dual colour available. Factory powder coated to marine quality as per Qualicoat regulations.
- Up to 120kg per door leaf allowing for large openings.
- Precision engineered rollers results in effortless operation.
- Air permeability class 4 (600 Pa).
- Water tightness class 9A (600 Pa).
- Wind load resistance class A3 (1200; 1/150).
- Trickle vents can be added.
- Option of adjustable jambs for easy adjustment at installation stage.



DOUBLE HOOK LOCK AND UNIVERSAL LOCK KEEP

The Double Hook Lock provides a 6-point locking system for increased security. A dual follower allows twin spindle function that helps to prevent unauthorised access when the lock is in the latched position.

Extremely strong but with easy operation, the lock provides you with reassurance and peace of mind.

Suitable for both left and right hand sides of the doors, the universal lock keep offers easy adjustment with an allen key.

The faceplate width provides increased strength, along with diecast back boxes to secure the centre deadbolt and hooks.

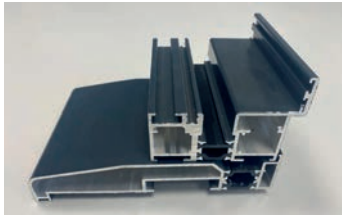


DOOR RESTRICTOR

A 90° door restrictor can stop the door leaf from extending past 90°, useful should a gust of wind catch the door in an open position. The restrictor arm can be easily detached to allow the door to fully open.

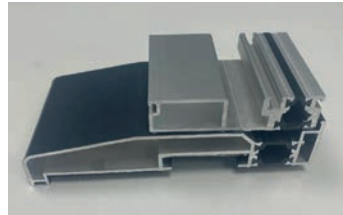


THRESHOLD OPTIONS



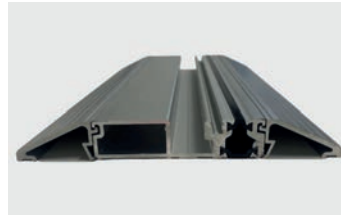
STANDARD THRESHOLD

The 55mm standard threshold offers a full weather barrier, protecting the home from the elements on external bi-folding doors.



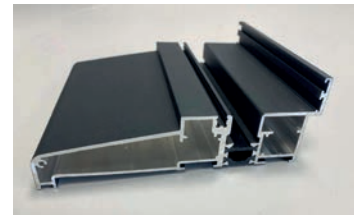
LOW THRESHOLD

The 20mm Low Threshold is not designed to offer as much weather protection but does offer a less obtrusive threshold. This may be a more suitable option for people with mobility issues.



LOW THRESHOLD WITH RAMPS

If it is impractical to sink a threshold below floor level, a ramp can be added either side of the low threshold as a possible alternative to aid easy access.



INTEGRATED CILL AND THRESHOLD

The 55mm integrated cill and threshold offers full weather rating on the lowest threshold and maximum overall sash height of the door leaf. The profile includes pre-drilled drainage slots along the inside face (outward opening only).





SUPERSLIM SLIDING PATIO DOORS

The PANORAMA SuperSlim sliding patio door is a contemporary, sleek sliding patio door offering double and triple track options.

Designed for significant opening sizes of up to 2500mm x 2630mm per sash, with a SuperSlim interlock of just 25mm. This results in increased glass area and excellent thermal properties of just 1.6 U W/m²K whilst reducing noise, maintaining security and weather-proofing.

The addition of soft closing technology makes for super smooth operation. The sliding function of these doors ensures that none of your rooms valuable interior space is taken up and can also be an ideal solution to integrate two adjacent rooms.

PROFILE OPTIONS

Narrow profiles, engineered with a bottom rail of 42mm width, gives the PANORAMA SuperSlim sliding patio door system almost unrestricted access. There are double and triple track options available.

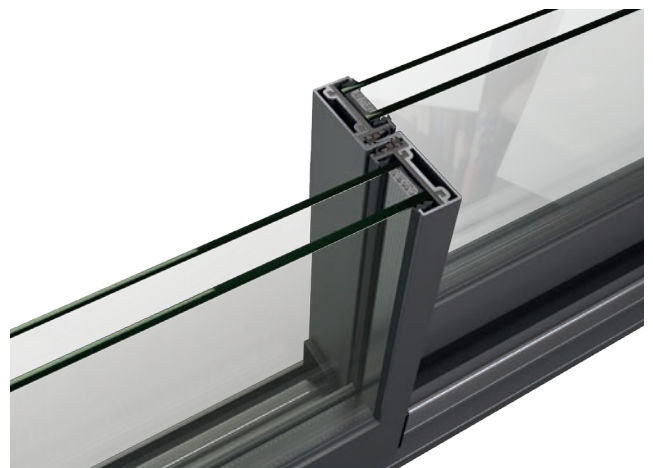
Numerous opening configurations are achievable, including up to 4 panes with a fixed sash.

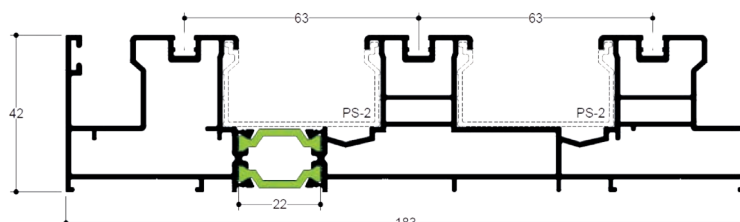
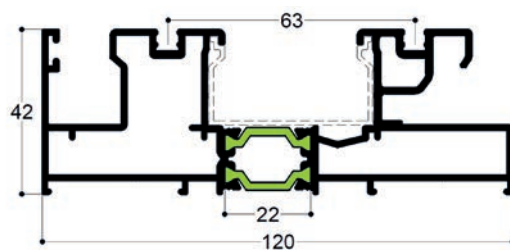
GLAZING

PANORAMA SuperSlim sliding patio doors are able to accommodate double and triple glazed units as well as blind in glass. The sophisticated profile design can encompass large sash sizes of up to 2500mm x 2630mm per sash, meaning greater light intake and an impactful vista.

INTERLOCKS

The market-leading 25mm SuperSlim, one-piece interlock is constructed using robust aluminium and can be used with the inline slider, regardless of the size of door. The option of a 50mm interlock is also available.





TECHNICAL PERFORMANCE

- Market-leading maximum sash size of 2500mm x 2630mm per sash.
- Maximum sash weight of 250kg per door leaf.
- Greater visibility with interlock sight lines of just 25mm.
- Double track outer frame depth 120mm.
- Triple track outer frame depth 183mm.
- Optional PAS 24 rating (subject to specification).
- Maximum insulation value – down to 1.6 U W/m²K and Door Energy Rated (DER) C to meet Part L requirements.
- Maximum weather proofing – tested to BS6375 Part 1 : 2009.
- Single or dual colour. Factory powder coated to marine quality as per Qualicoat regulations.

SPECIAL FEATURES

- Trickle vents can be added.
- Multi-point double hook, 6 point locking mechanism.
- Stainless steel lamina on rail profiles for smooth sliding.
- Plastic rail cover (PVC) for thermal insulation and protection from water.
- Rubber tubular gaskets (EPDM).
- Two levels of channelling water (to the outer side of the frame), providing better drainage for the rails.



PROFILE COLOURS

The available colours are White 9016 (Gloss), Anthracite Grey 7016 (Matt), Black 9005 (Matt), Anthracite Grey 7016 (Matt) on White 9016 (Gloss), Black 9005 (Matt) on White 9016 (Gloss).



UNIVERSAL ALUMINIUM CILLS

A selection of universal aluminium cills with pre-drilled screw ports help to guide any water away from the brickwork and provide a finishing feature.

Our aluminium cills come complete with plastic end caps, colour matched in the standard stock colours.

Available cill sizes are 90mm, 150mm, 190mm and 230mm.

Available in Black, White, Anthracite Grey and dual colours of Anthracite Grey/White and Black/White.



BI-FOLD HANDLE OPTIONS

The standard bi-fold handles are available in 6 colour finishes.



White



Black



Anthracite Grey



Polished Chrome



Satin Chrome



Graphite

Intermediate handle finishes.



White



Black



Anthracite Grey



Polished Chrome



Satin Chrome

HIGH SECURITY CYLINDER

To prevent cylinder manipulation, Ultimate doors are fitted with a 3 star high security Yale cylinder, and for convenience all doors are supplied with 3 keys as standard.



Open & Close function and key storage



Bi-fold Centrefold D-Handles available in White, Black or Anthracite Grey



PATIO DOOR HANDLE OPTIONS

The Standard Patio Door Handles are available in 4 colour finishes, White, Black, Polished Chrome (pictured) and Satin Chrome.

Due to possible variations in the printing process, please refer to physical colour swatches for an accurate representation of the above finish options.

The images used in this brochure are the property of Alunet Systems and Europa.

*the***ultimate**[®]
collection



www.theultimatecollection.uk

In keeping with market trends and improvements we reserve the right to change specifications accordingly and without notice.
Hardware, furniture and glass options may vary from those shown on images used at the time of print. Published by John Fredericks Plastics December 2024.